

# Kaunihera | Council

## Ngā Tāpiritanga – Mēneti | Attachments – Minutes

Attachments – Minutes of a meeting of an ordinary meeting of Matamata-Piako District Council held in the Council Chambers, 35 Kenrick Street, TE AROHA on 07 May 2025 at 09:00.

TAKE | ITEM NGĀ IHINGA | TABLE OF CONTENTS

WHĀRANGI | PAGE

<b>7.1</b>	<b>Council Hearing of Submitters - Policies, Bylaws and Fees and Charges</b>	
Attachment A	Hearing Schedule 7 May 2025 Final .....	2
Attachment B	Additional Information - Emails received from Kelly Ralph for consideration and tabling at Council Hearing 7 May 2025.....	3
Attachment C	GMANZ Presentation to Matamata-Piako District Council.....	4
Attachment D	Grassroots Trust Presentation to Matamata-Piako District Council .....	20
Attachment E	Problem Gambling Presentation - Matamata-Piako District Council.....	33

---

**Note:** *The attachments contained within this document are for consideration and should not be construed as Council policy unless and until adopted. Should Councillors require further information relating to any reports, please contact the relevant manager, Chairperson or Deputy Chairperson.*



**Hearing Schedule of Policy, Bylaw and draft Fees and Charges Review**

**7 May 2025**

Council Chambers, 35 Kenrick Street, Te Aroha and/or Remotely

Sub No.	Page No. (Attachments Document)	Time	Submitter	Organisation	Topic	Attending
GVP55	14	9.00	Jarrold True	Gaming Machine Association NZ	Gambling Venue Policy	In Person
CSB267	9	9.05	Inspector Mike Henwood	NZ Police	Community Safety Bylaw	In Person
CSB265	1	9.10	Steve Cullen		Community Safety Bylaw	Via Microsoft Teams
GVP231 CSB232	8 & 13 (Submissions document)	9.15	Jade Green	Mana Rangatahi	Gambling Venue Policy Community Safety Bylaw	In Person
GVP233	37	9.20	Samantha Alexander	The Lion Foundation	Gambling Venue Policy	Via Microsoft Teams
GVP258	61	9.25	Madelaine Cullen	Problem Gambling Foundation	Gambling Venue Policy TAB Venue Policy	Via Microsoft Teams
GVP279	Attached to infoCouncil report	9:30	Martin Bradley	Grassroots Trust	Gambling Venue Policy	In Person
Read through of submissions, deliberations and consideration of InfoCouncil reports (From 9.35am)						

**Emails received from Kelly Ralph for consideration and tabling at Council Hearing 7 May 2025**

Received 02 May 2025 at 8.32am

Just adding this to make council aware of just how dangerous smoke inhalation is .

Received 02 May 2025 at 8.34am:

More than half of fire-related deaths result from smoke inhalation, according to the Burn Institute. Smoke inhalation occurs when you breathe in harmful smoke particles and gases. Inhaling harmful smoke can inflame your lungs and airway, causing them to swell and block oxygen. This can lead to acute respiratory distress syndrome and respiratory failure.

Received 02 May 2025 at 9.03am:

Very sorry I can't make it now because i have a meeting at 9.30 am with my [redacted] . but I stand by everything I have said to you outside fires are a real problem in Goodwin ave and incinerators because smoke goes inside houses and people like my partner are badly affected from smoke inhalation due to being severe asthmatics which often puts them in hospital .Smoke inhalation is more concerning if you are:

- exposed in an enclosed space (more than 5 minutes)
- have experienced prolonged exposure (hours) to smoke, e.g. from bushfires
- have a pre-existing medical condition such as:
  - respiratory disease, e.g. asthma
  - heart disease
  - being pregnant.

**GMA**  
**NZ** Gaming  
Machine  
Association

# Presentation to Matamata- Piako District Council

Jarrold True  
7 May 2025



# Introduction

- Jarrod True – Gaming Machine Association of New Zealand.
- GMANZ supports option 1, namely:
  - A district-wide cap of 15 venues.
  - A relocation provision that enables venues to move to a location with the same, or lower, deprivation score.
  - The removal of the requirement to consult and get approval from affected parties within a 250 metre radius.

## District-Wide Cap

- A district-wide cap is easier to administer and easier to calculate.
- The current per town population cap is difficult to calculate due to difficulty in obtaining accurate and up to date population information.

## Consulting Affected Parties

- There is no requirement in the Gambling Act to consult and obtain approval from affected parties within a particular radius.
- The Act provides for public input and consultation in relation to the gambling venue policy itself, not each application.
- “Affected parties” includes the other existing gaming venues, who will naturally object in order to maintain their market share.
- It is not possible to consult all affected parties and comply with the statutory requirement to consider and determine all consent applications within 30 working days.

## The Proposed Relocation Policy is Positive

- It is positive that venues are able to move away from undesirable areas to more suitable sites.
- Venues should be free to move away from residential areas/sensitive sites.
- It is fair and reasonable that a venue can reestablish following a fire, flood, or earthquake.
- Venues should be free to move out of earthquake-prone buildings.
- Venues should be free to move to new, modern, smaller premises.



The Old Te Rapa  
Tavern –  
Sports Bar

45 Sunshine Avenue, Te  
Rapa, Hamilton 3200



GMA  
NZ Gaming  
Machine  
Association

The Old Te Rapa  
Tavern –  
Sports Bar

45 Sunshine Avenue, Te  
Rapa, Hamilton 3200

7





The Modernised Te  
Rapa Tavern –  
Sports Bar

45 Sunshine Avenue, Te  
Rapa, Hamilton 3200



**GMA** Gaming  
**NZ** Machine  
Association

## The Modernised Te Rapa Tavern - Sports Bar

45 Sunshine Avenue, Te  
Rapa, Hamilton 3200

## The Proposed Cap

- The proposed cap is reasonable.
- The problem gambling rate is very low: 0.2%.
- Local problem gambling presentations are extremely low:
  - 2022/23 0 new clients 2 clients seen in total

## The Proposed Cap

- There is no link between gaming machine numbers and problem gambling rates.
- In the last 10 years, over 4,500 machines have been removed (a 25% reduction). However, over the same period, the problem gambling rate has remained the same.

## Benefits from Gaming

- The machines generate extremely valuable funding for local community and sporting groups.
- 2023: \$1,656,460.00 in local grants.
- In addition to the above grants, the machines support three club venues: Matamata Club, Te Aroha Memorial RSA ,and The Town and Country Club.
- Player entertainment (69.3% of adult New Zealanders gamble at least once a year).

## The Move to Online Gambling

- Adopting a more restrictive policy is unlikely to reduce problem gambling, but will accelerate the migration to offshore-based online gambling.





## Online Gambling

- 27% of adults participate in some form of online gambling, with 19% of this group doing so weekly.
- The Government has confirmed that online gambling licences will be granted in early 2026.
- Online gambling advertising will be permitted.

## Online Gambling

- Online casino gambling is undesirable.
- No local grants.
- No local employment.
- Large prizes.
- Frequent inducements to gamble.



# Questions Welcome



grassroots<sup>®</sup>  
trust

Matamata – Piako District Council  
Class 4 Gambling Venue Policy Review

**May 2025**



## About Us

- The Grassroots Group currently operates at 82 venues across New Zealand and is the **largest Class 4 Operator in the North Island**.
- Grassroots operates **36 gaming machines** at **2 venues** in the Matamata-Piako District – Palace Hotel (Te Aroha) and The Top Pub & Eatery (Morrinsville).
- Grassroots was the only Class 4 Operator to ever be issued a **3-year licence in 2019 for demonstrating best practice and compliance**.
- The Grassroots Group is extremely proud to support New Zealand communities, with Grassroot Trust returning \$29.5m (42.41%) and Grassroots Trust Central returning \$7.8m (40.22%) at FYE24.



## 2023 Milestone

- Celebrating 20 years supporting New Zealand communities, donating millions of dollars to worthy causes designed to benefit our local communities.

**Over \$230m**  
**Returned to NZ Communities**





# Grant Funding to Matamata-Piako

**\$1.6m**

Provided by Class 4 Gaming Societies like Grassroots, in 2023

**\$1.4m**

Provided by Class 4 Gaming Societies like Grassroots, in 2022

[www.granted.govt.nz](http://www.granted.govt.nz)



## Grassroots Trust - Grant Funding

# Matamata-Piako

# \$479,504.31

Provided to **34 different sport, education and community groups** in the Matamata-Piako District for the 12-month period ending 31 March 2025.



## Grassroots Trust - Grant Funding

### Community Benefit:

- **Te Aroha College Old Boys Rugby & Sports Club Incorporated** Grassroots provided \$60,000.00 towards the costs associated with salary for the Junior Development Officer, physiotherapy services and purchasing first aid/medical suppliers.
- **Te Aroha Group New Zealand Riding for the Disabled Association Inc** Grassroots provided \$11,448.00 towards the salary costs of the Assistant Coach.





## Grassroots Trust - Grant Funding

### Community Benefit:

- **Matamata-Piako District Council**  
Grassroots provided \$50,000.00 towards the costs associated with building a two-court indoor sports stadium, to service Matamata schools, the community and the district.
- **David Street School**  
Grassroots provided \$8,186.96 towards the costs associated with replacing the astroturf.



DAVID STREET SCHOOL  
Kia Maia - Have Courage



## Class 4 Grant Funding

- The distribution of Class 4 Gambling funds is efficient and effective.
- Grants make a positive difference to many community organisations across New Zealand, which would struggle to survive without this funding.
- **Nationally Class 4 Gaming returns over \$300m** and clubs a further \$50m to community organisations every year.
- Furthermore, the Government receives around 33% of gaming machine proceeds in taxes and duties, plus a further 1.08% for the problem gambling levy.



## Harm Prevention & Minimisation

- **Problem gambling in New Zealand continues to be low**, currently affecting only 0.2% of the adult population.
- The Industry is **committed to minimising harm** caused by gaming machines.
- Societies and Venues operate under the Gambling Act and Regulations, which include a long list of world leading harm prevention and minimisation measures that must be in place at venues.
- The Government/Ministry of Health receives over \$20m each year through the problem gambling levy from Class 4 Gaming Societies to help those most at risk from their gambling.





## Harm Prevention & Minimisation

- Grassroots now operates **Facial Recognition Technology** in almost 50% of venues. Both the Palace Hotel and The Top Pub & Eatery will have Facial Recognition turned on shortly.
- An **Exclusion Order/Multi-Venue Exclusion Order Programme** is in place across all venues in the Matamata-Piako District. In 2022/2023, the Matamata-Piako District only had **2** registered excluded problem gamblers.
- A **National Database of Excluded Gamblers** is administered and managed by The Salvation Army.



## Sinking Lid Policies & Online Gambling

- **Sinking Lid Policies are ineffective** – reducing gaming machine numbers has not reduced gaming machine expenditure which is evident across Territorial Authorities.
- A reduction in local gaming machine offering will only **lead to increased activity through online gambling**, a gambling spend to offshore internet and mobile-based offerings.
- Government has recently announced that a limited number of online casino licenses will be available and allocated by auction in 2026.



## Class 4 Gambling Venue Policy Review

- Grassroots **SUPPORTS** Council's proposed option to **introduce an Absolute Cap**, allowing 15 gambling venues and 201 gaming machines to operate within the district wide cap.
- Grassroots **SUPPORTS** Council's proposed option, that new gambling venues must be 100 metres away from sensitive sites.
- Grassroots **DOES NOT SUPPORT** the current requirement for new gambling venues to consult with affected parties which includes other class 4 venues operating within the district.

This is anticompetitive and Council should be reviewing applications on their own merit and information provided against policy provisions.



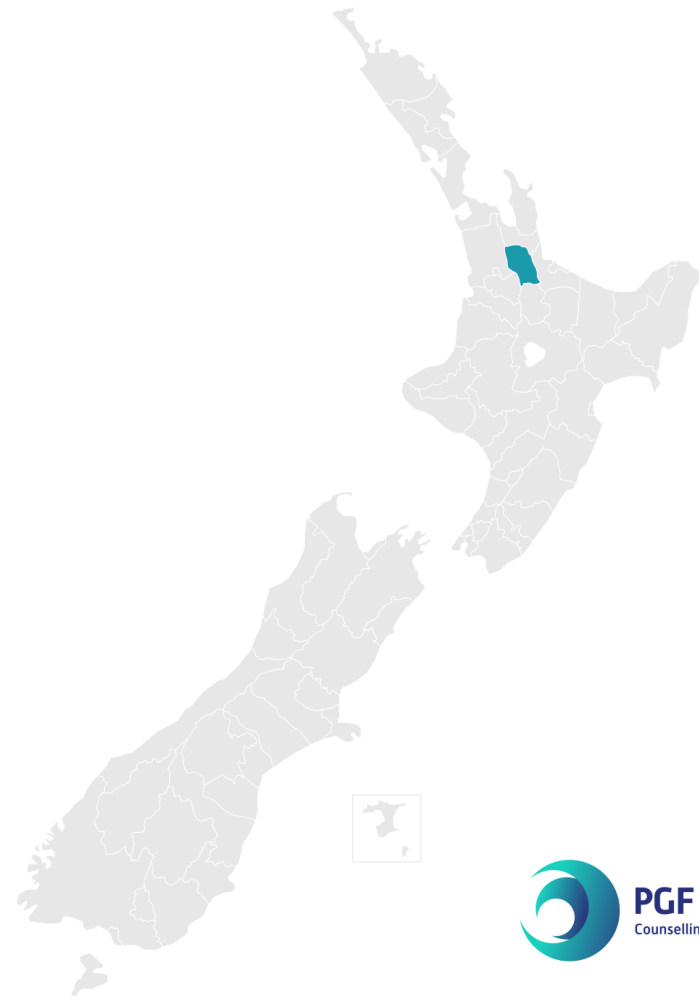
## Class 4 Gambling Venue Policy Review

- Council and Class 4 Gambling Operators can in **partnership** support infrastructure / community facilities in the Matamata-Piako District, therefore **supporting and benefiting its communities together**.

# Matamata-Piako District Council

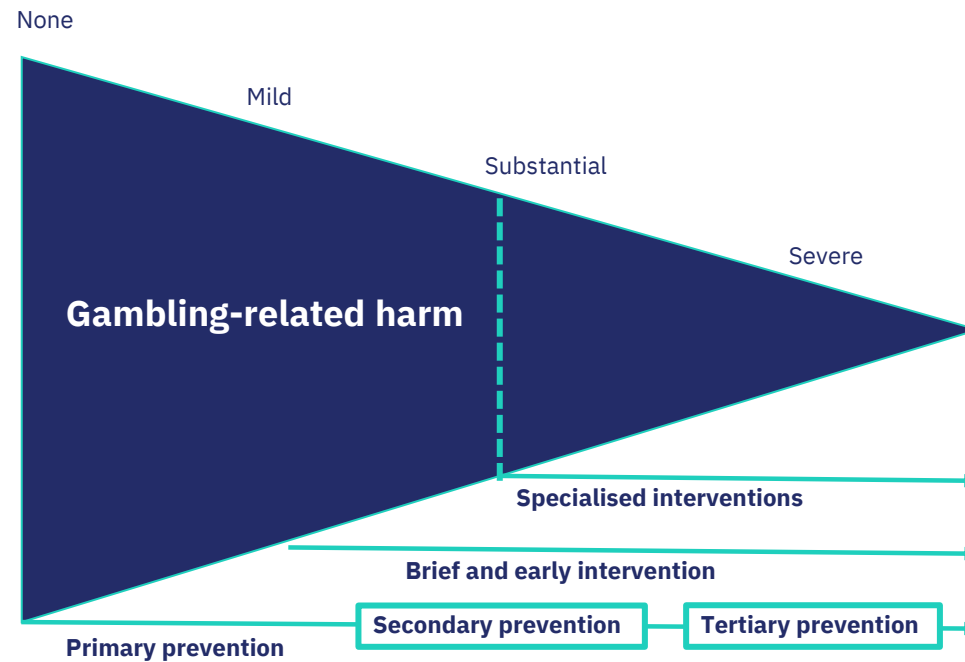
Class 4 Gambling and TAB Venues Policy Review

**Madelaine Cullen**  
Policy Advisor



# Gambling Harm

Is experienced on a continuum:

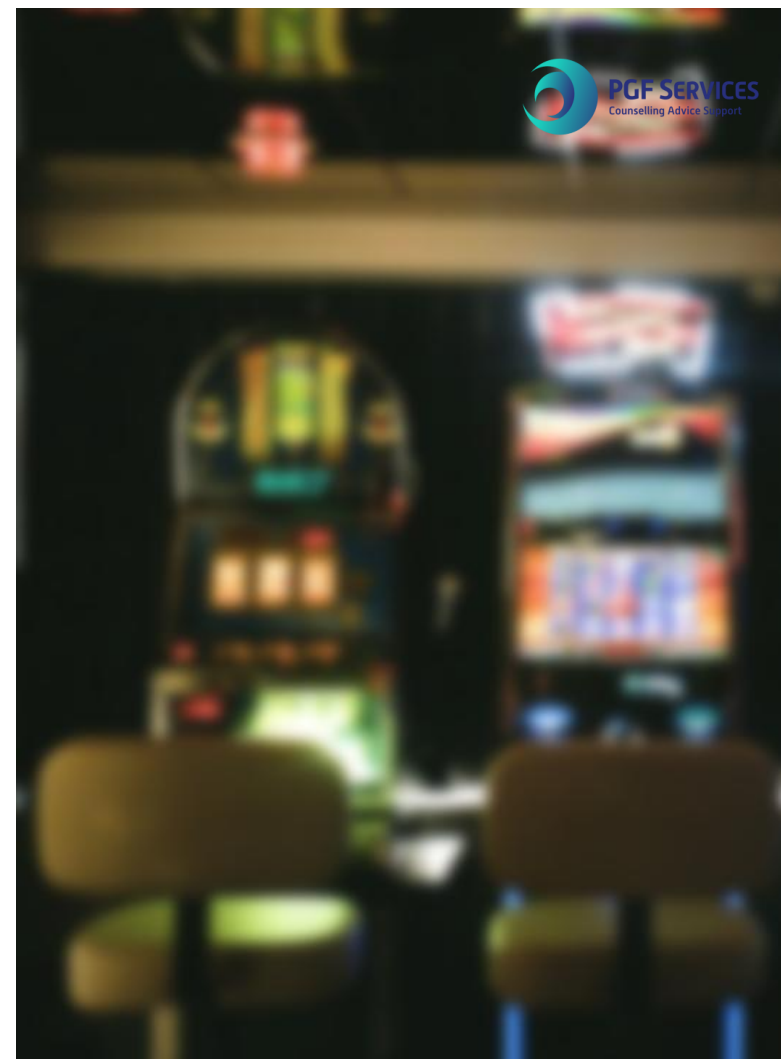


**Source:** Ministry of Health (2022). *Strategy to prevent and minimise gambling harm 2022/23 to 2024/25*.

# Harm from Pokies

Pokies are:

- The **most harmful form of gambling** in Aotearoa New Zealand
- **Highly addictive** and specifically designed to be very absorbing
- **47% of all clients** cite Class 4 gambling as primary mode of harm



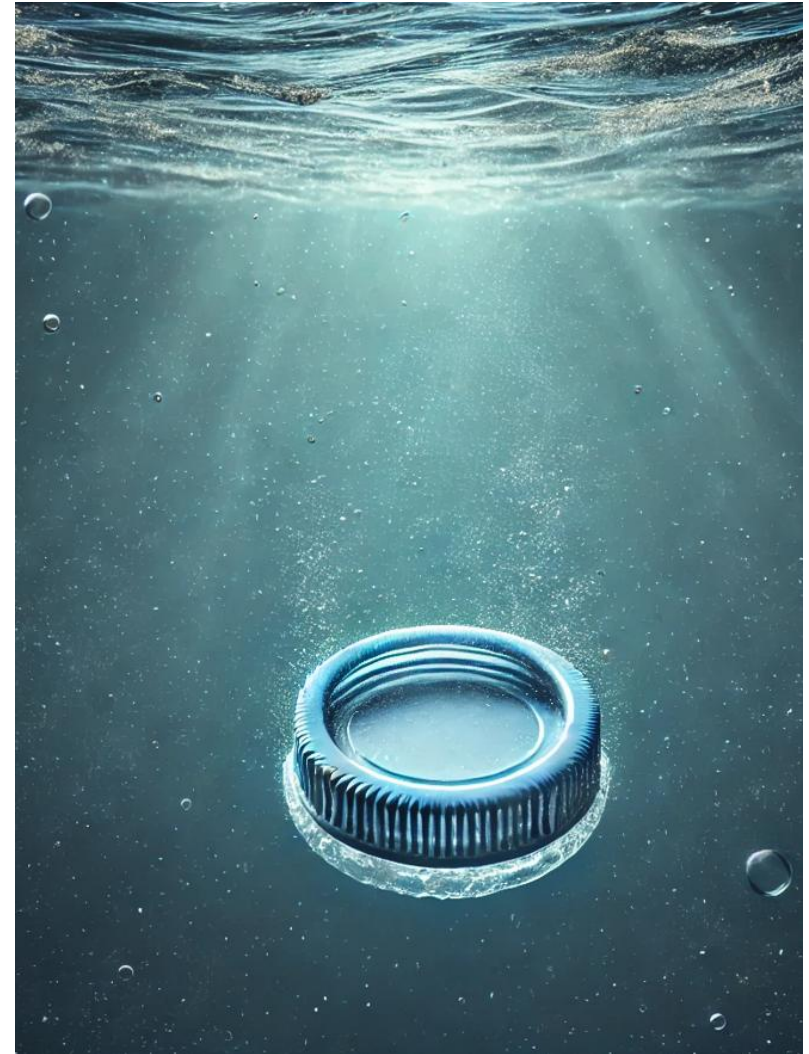
# Best Policy = Sinking Lid

## Trend

- Over **56% of all councils** in NZ have a sinking lid

## Why?

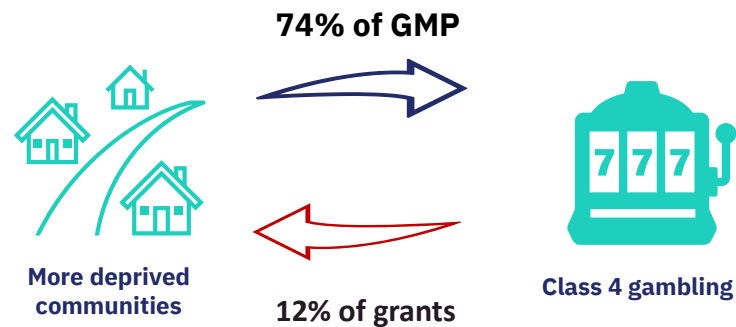
- Best public health approach to minimise harm
- Evidence shows a **sinking lid reduces problem gambling expenditure by 13%**





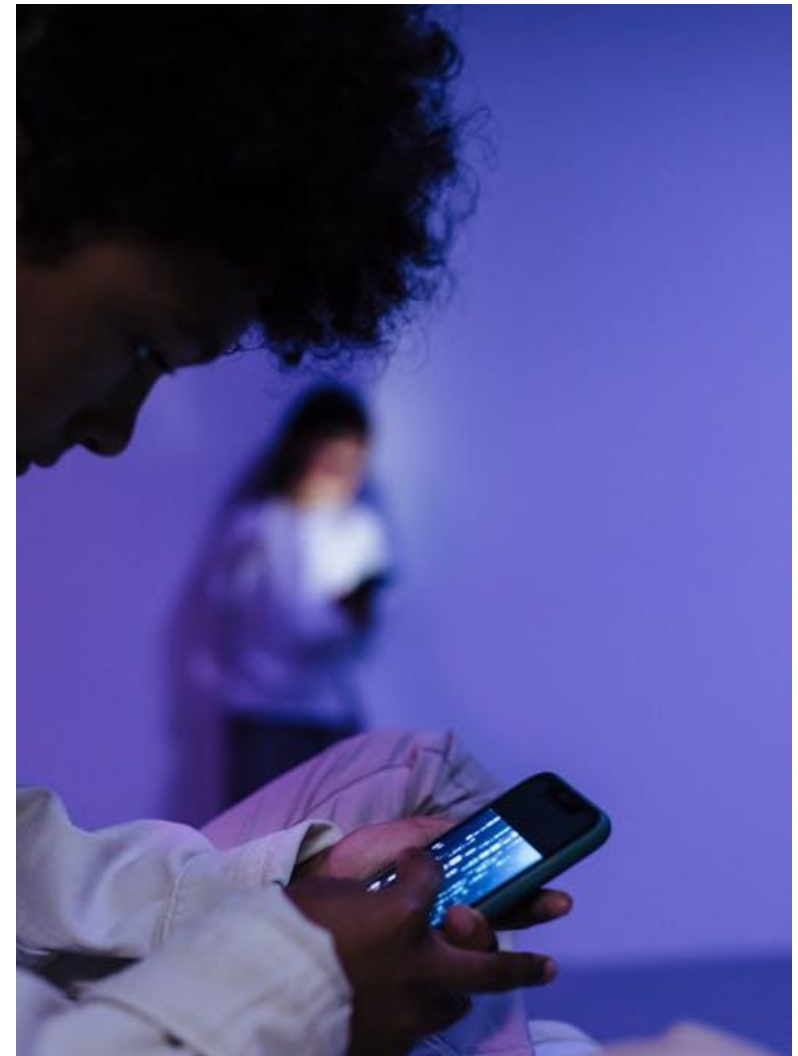
# Class 4 Community Grants

- Need to focus on where money is coming from
- Evidence strongly suggests that Class 4 gambling **transfers wealth** from more deprived communities to less deprived communities



# Is Online Gambling Replacing Pokies?

- **No evidence** online gambling is replacing pokies
- Will **soon be regulated** by Central Government
- Pokies **still the most harmful form of gambling**



# Thank you.

Questions?



[www.pgfnz.org/tla](http://www.pgfnz.org/tla)



[maddie.cullen@pgfnz.org](mailto:maddie.cullen@pgfnz.org)



[fb.com/pgfnz](https://fb.com/pgfnz)