

Waharoa (Matamata) Aerodrome Committee

Ngā Tāpiritanga – Mēneti | Attachments – Minutes

Attachments – Minutes of a meeting of an ordinary meeting of Waharoa (Matamata) Aerodrome Committee held in the Te Takere Room
Matamata-Piako Civic and Memorial Centre
11 Tainui Street
MATAMATA on 20 Jun 2024 at 10:00.

TAKE | ITEM NGĀ IHINGA | TABLE OF CONTENTS

WHĀRANGI | PAGE

7.1 Aerodrome - Aeronautical Study

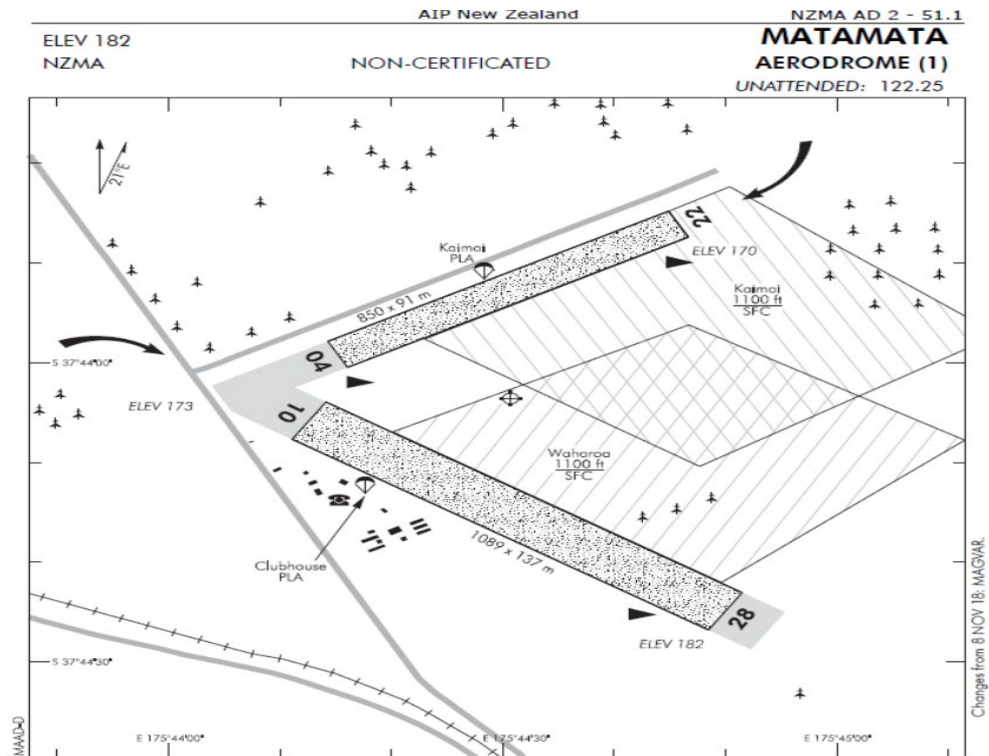
Attachment A 20 June - Workshop - WMAC meeting - Aerodrome Power Point2

Note: *The attachments contained within this document are for consideration and should not be construed as Council policy unless and until adopted. Should Councillors require further information relating to any reports, please contact the relevant manager, Chairperson or Deputy Chairperson.*



Matamata (Waharoa) Aerodrome

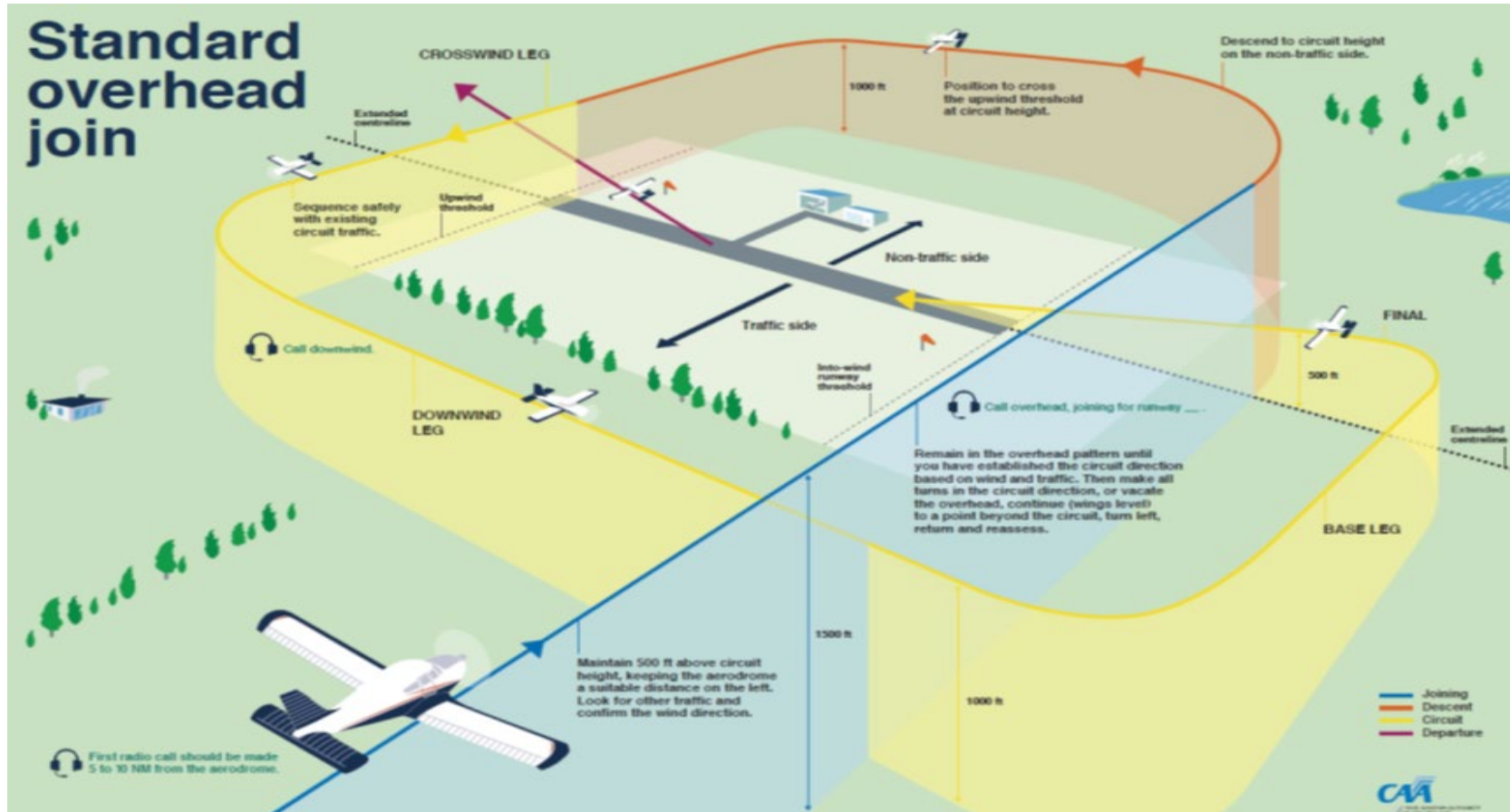




1. Circuit Direction: RWYs 04, 28 — Left hand
RWYs 10, 22 — Right hand
2. A private aerodrome located approx 0.5 NM north of RWY 10 threshold necessitates extra care when operating on RWYs 10, 22 and 04.
3. Enroute traffic should avoid flying through Matamata MBZ due to the presence of parachute and gliding operations.
4. All pilots should avoid using the overhead join procedure at Matamata aerodrome due to parachute and gliding operations.
5. RWY 04/22 may be closed for grass harvest. White crosses displayed will indicate RWY closure.
6. When RWY 04/22 is in use, model aircraft operations may close RWY 10/28 and be conducted within "Waharoa" — modellers will activate only one model flying area at a time.
7. Intensive sporting activities take place, particularly during weekends.
8. Glider Winch Launching: There will be a white "W" displayed on the threshold of the active vector when the winch is in use. Refer to Matamata Winch Launching Chart. Glider chat frequency outside of the MBZ is 133.55 MHz.



Overhead Join Procedure



Proposed Change in Circuit Direction

