

Kaunihera | Council

Ngā Tāpiritanga – Mēneti | Attachments – Minutes

Attachments – Minutes of a meeting of an ordinary meeting of Matamata-Piako District Council held in the Council Chambers, 35 Kenrick Street, TE AROHA on 25 Mar 2026 at 9:00.

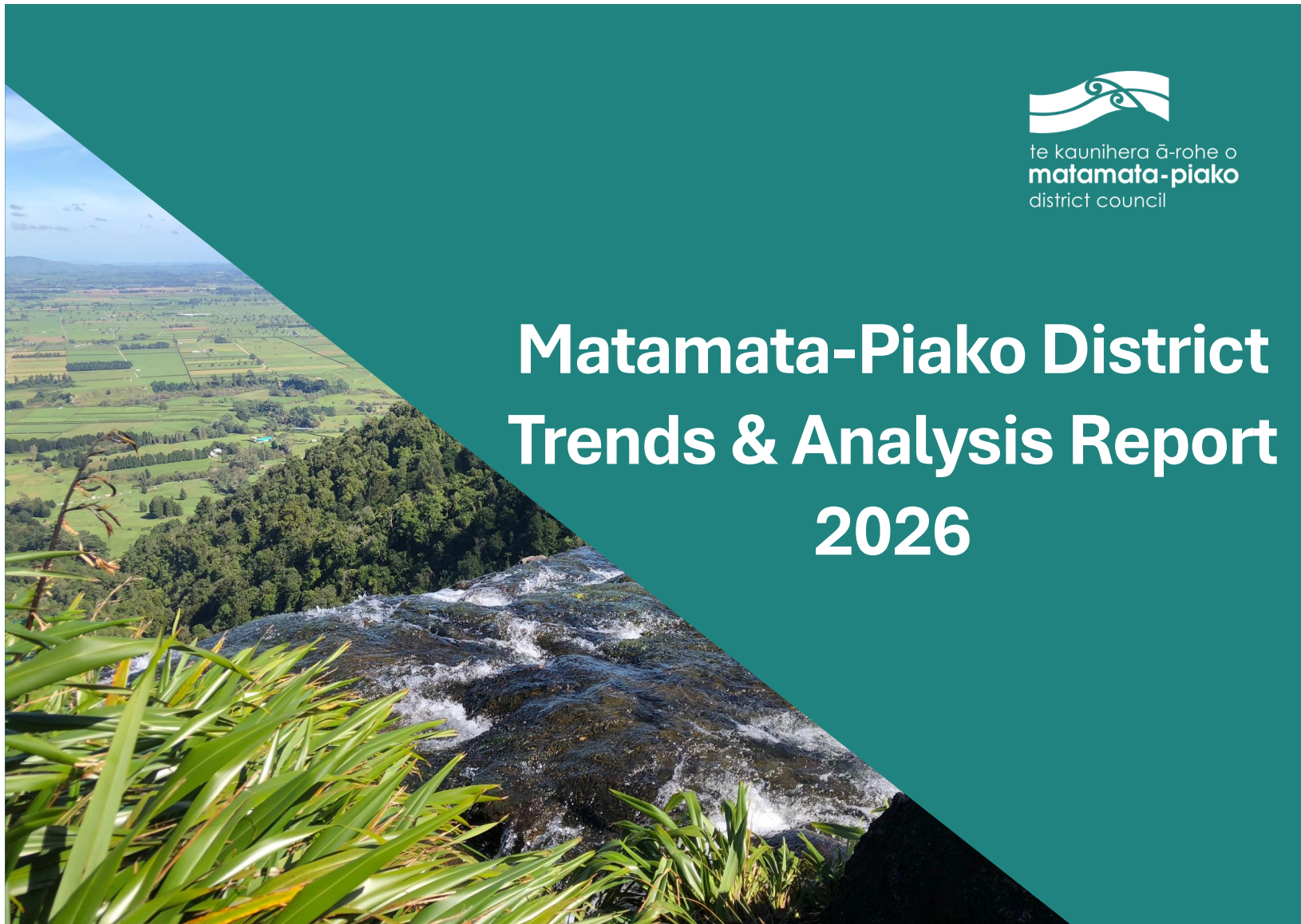
TAKE | ITEM NGĀ IHINGA | TABLE OF CONTENTS

WHĀRANGI | PAGE

7.6	Trends and Analysis Report - Long Term Plan 2027-2037	
	Attachment A Additional Attachment - Item 7.6 - Trends Analysis Report 2029	2
8.3	Risk and Assurance Committee Report of 24 February 2026	
	Attachment A MPDC - RAC - 24.02.26 - Chair Hui Summary	56

Note: *The attachments contained within this document are for consideration and should not be construed as Council policy unless and until adopted. Should Councillors require further information relating to any reports, please contact the relevant manager, Chairperson or Deputy Chairperson.*





Contents

Introduction	2	Safety	23
Top risks	4	Our Economy	26
Key trends	5	Education	32
Our People	6	Artificial intelligence	33
Our population	8	Housing	34
Relationship with Manawhenua.....	9	Our Environment	40
Growth	11	Natural climate	41
Deprivation.....	12	Legislative change	47
Health	14	Appendix One	49
Access	21	How we stack up.....	49

Introduction

The Trends and Analysis Report (Report) provides an overview of the key issues, trends, and opportunities shaping the future operating environment of the Matamata-Piako District Council (MPDC). It is designed to support strategic thinking and decision-making and guide the development of the Long-Term Plan 2027-2037 (LTP).

It highlights existing and emerging trends, policy and legislative changes, community shifts, and broader social, economic, technological, and environmental drivers that may impact MPDC and its communities.

This report draws on a wide range of sources, including national and regional data, reports, and data analysis to collate the most current information available at the time of publication. The report provides a baseline understanding of the broader context in which Council operates and serves as a reference point throughout the strategic planning process. Ultimately, the report seeks to strengthen our understanding of the Matamata-Piako District so we can plan better for our future.



Top risks

The table below shows the top risks as identified The World Economic Forum's top global risks for 2026,¹ the Government and Matamata-Piako District Council. The top risks show the risks globally, nationally and locally are not isolated but are connected.²

Key
Economic
Environmental
Societal
Geopolitical
Technological

	Top MPDC risks – as identified by Council in 2025	Top 10 New Zealand Government Risks ³	Top Global Risks (next 2 years) 2026 ⁴	Top Global Risks (next 10 years) 2026
1	Ineffective emergency response and recovery	Earthquake	Geopolitical confrontation	Extreme weather events
2	Disruption to essential service delivery	Tsunami	Misinformation and disinformation	Biodiversity loss and ecosystem collapse
3	Information security	Volcanic activity	Societal polarization	Critical change to Earth systems
4	Reputation/relationship with community stakeholders	Severe weather and flooding	Extreme weather events	Misinformation and disinformation
5	Legislative non-compliance	Space weather	State-based armed conflict	Adverse outcomes of AI technologies
6	Ineffective strategic partnerships with mana whenua, iwi, hapū, Māori	Drought	Cyber insecurity	Natural resource shortages
7	Ineffective response to climate change impacts	Pest disease incursion	Inequality	Inequality
8	Inadequate financial planning	Communicable disease outbreak	Erosion of human rights and/or civic freedoms	Cyber insecurity
9	Failure to respond appropriately to political change	Vector-borne disease outbreak	Pollution	Societal polarisation
10	Ensuring workforce capacity and capability	Radiological substance incident	Involuntary migration or displacement	Pollution
11	Ensuring health, safety and wellbeing			

¹ (World Economic Forum 2026)

² The key used by WEF has been applied.

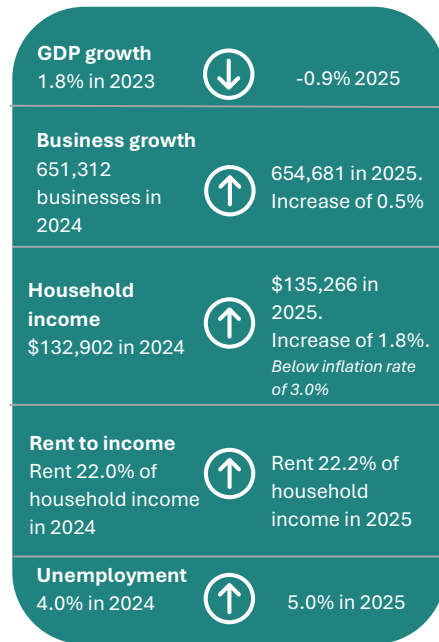
³ [New Zealand's National Risks](#) (Department of the Prime Minister and Cabinet 2025)

⁴ (World Economic Forum 2026)

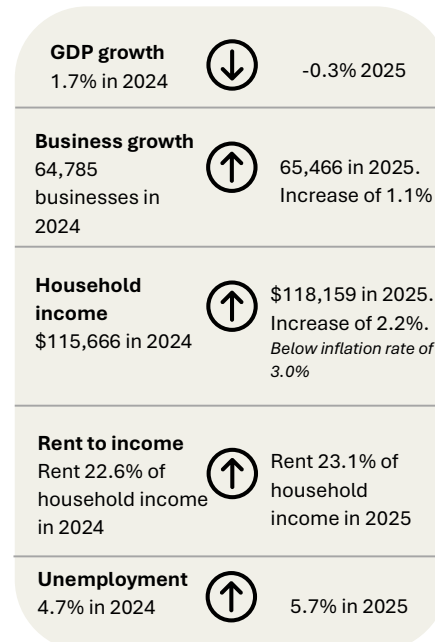
Key trends

Overview

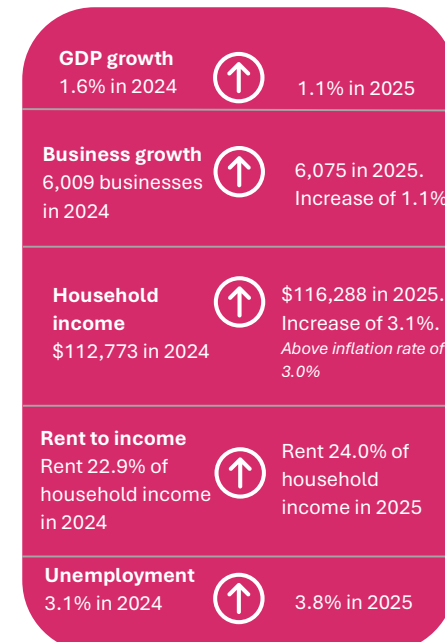
National – Aotearoa NZ



Regional - Waikato



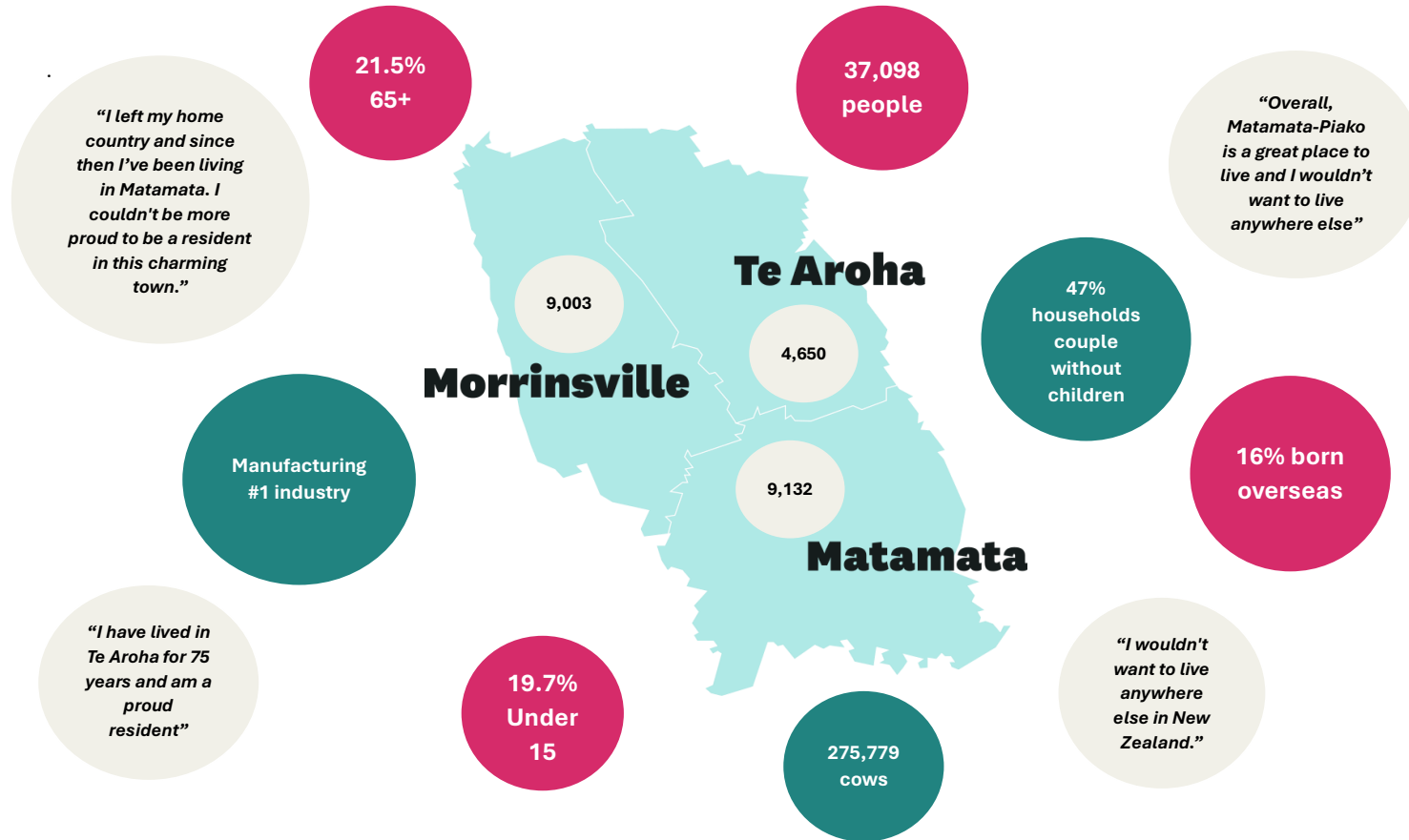
Local – Matamata-Piako



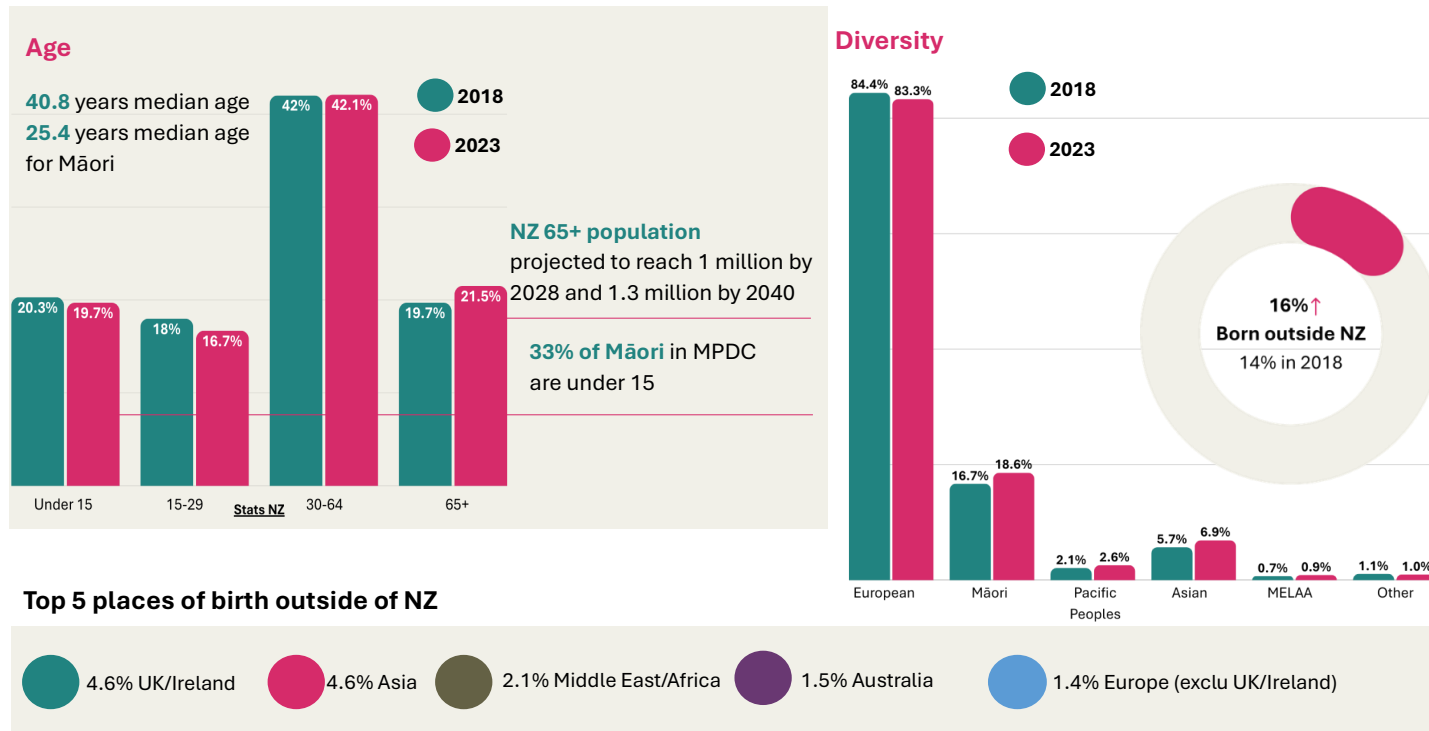
Source: Infometrics



Our People

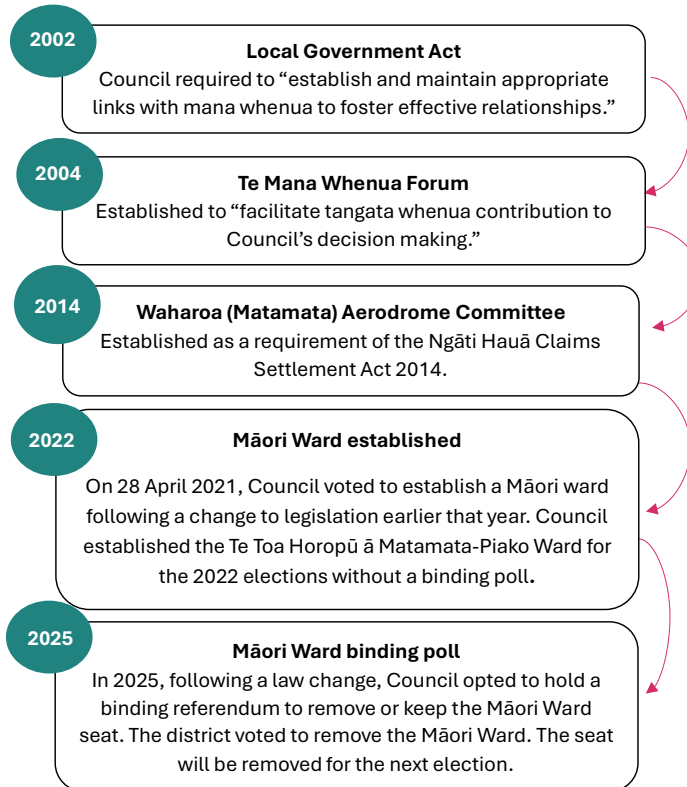


Our population – Matamata-Piako



Stats NZ: [Matamata-Piako District, Place and ethnic group summaries | Stats NZ](#)

Relationship with Manawhenua



Council has various statutory obligations it must uphold, including the requirement to maintain and improve opportunities for iwi involvement in decision making processes and to engage meaningfully with Māori on matters that affect their interests.

As the number of people in the district who identify as Māori increases, and a large proportion of Māori are young, it is important for Council to consider its role in building lasting and meaningful relationships with Manawhenua and driving and supporting outcomes for iwi Māori in the district. Considering the decision to remove the Māori Ward in the 2025 Local Election referendum, Council could consider alternative partnership mechanisms to maintain Māori representation and involvement in decision-making.

- The iwi in our district include:**
- Ngāti Hako
 - Ngāti Hinerangi
 - Ngāti Maru
 - Ngāti Rāhiri Tumutumu
 - Ngāti Tara Tokanui
 - Raukawa
 - Ngāti Hauā
 - Ngāti Korokī Kahukura
 - Ngāti Pāoa
 - Ngāti Tamaterā
 - Ngāti Whanaunga
 - Waikato-Tainui

What Council is doing: Partnerships

Council is engaging with Manawhenua to establish a Mana Whakahono ā Rohe (MWāR). A MWāR is a binding statutory arrangement that intends to establish a structured relationship between Council and iwi authorities under the RMA.

After initiating the process, an agreement must be reached within 18 months. Iwi initiated the process with MPDC in July 2025 and continue to work through the process with Council at the time of writing. A decision on the agreement must be reached by the end of 2026.

(see MFE: [Mana Whakahono ā Rohe: Iwi participation arrangements | Ministry for the Environment](#))

Spotlight: Papakāinga Plan Change

Following collaboration and extensive consultation with tangata whenua, the Papakāinga Plan Change came into effect (PC 54) in 2024.

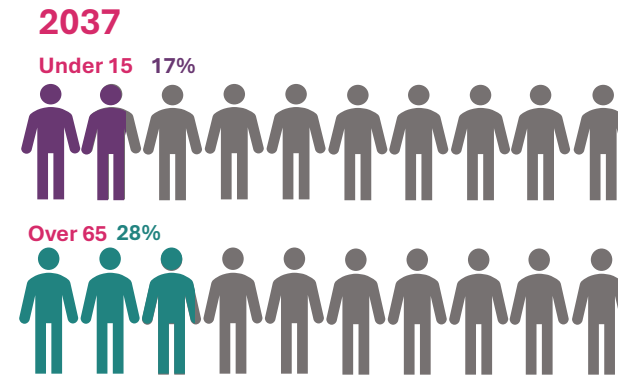
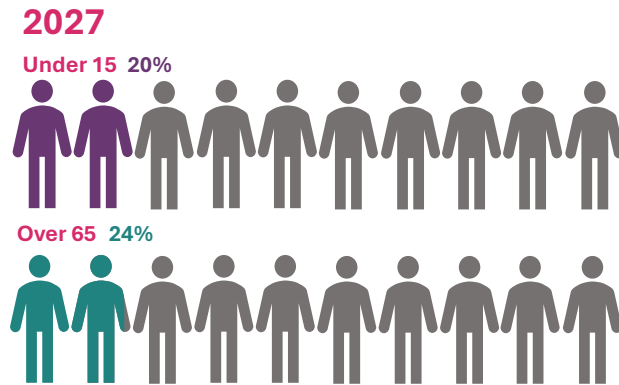
The change includes the creation of a new Māori Purpose Zone with two precincts and district wide provisions. Papakāinga tahi/Precinct one enables houses to be built on Māori freehold land or marae and Papakāinga rua/Precinct two enables housing to be built in areas with existing papakāinga. The district-wide provisions enable development on Māori freehold, general and Treaty settlement land (within specific rules).

This project highlights how Council and Manawhenua can collaborate and support the social, cultural and economic wellbeing of tangata whenua.



Growth

District Growth	Matamata Growth	Morrinsville Growth	Te Aroha Growth
<i>High-growth scenario</i>	<i>High-growth scenario</i>	<i>High-growth scenario</i>	<i>High-growth scenario</i>
2027 40,217	2023 9,270	2023 9,390	2023 4,780
8% ↑	7% ↑	10.4% ↑	8.7% ↑
2037 43,443	2030 9,913	2030 10,367	2030 5,194



Te Ngira 2023 Population Projections – High growth scenario

